



# 計量証明書

報告番号 L- 0792231  
発行日 平成19年10月3日

東京都中央卸売市場 様

試料名	専門家会議の運営に係る調査委託(その6) 鉛直ガス調査
受付年月日	平成19年9月3日 ~ 9月27日
試料の由来	自社採取

計量証明事業所  
千葉県知事登録(濃度)第527号  
環境省土定機関  
環境大臣 - 763  
株式会社 センター  
〒292-0834 見4-16-2  
TEL 0438-36-5073  
計量管理者  
環境計量士

貴依頼による濃度に係わる計量結果を次の通り証明します。

検体名	計量の対象	ベンゼン (vol ppm)	***	採取年月日
O-42	GL- 1.0 m	不検出	***	平成19年9月3日
O-42	GL- 1.5 m	不検出	***	平成19年9月3日
O-42	GL- 2.0 m	不検出	***	平成19年9月3日
O-42	GL- 2.5 m	不検出	***	平成19年9月3日
O-42	GL- 3.0 m	不検出	***	平成19年9月3日
O-42	GL- 3.5 m	不検出	***	平成19年9月3日
O-42	GL- 4.0 m	不検出	***	平成19年9月3日
L-34	GL- 1.25 m	不検出	***	平成19年9月26日
L-34	GL- 2.25 m	不検出	***	平成19年9月26日
L-37	GL- 2.10 m	不検出	***	平成19年9月27日
L-37	GL- 2.60 m	不検出	***	平成19年9月27日
-以下余白-				
定量下限値		0.05		
計量方法		直接捕集-GC-PID法		

### 【備考】

不検出とは定量下限値未満を示す。  
試験方法は平成15年環境省告示第16号に定める方法による。

採取年月日	-
採取時刻	-
気 温	-
水 温	-
天 候	-

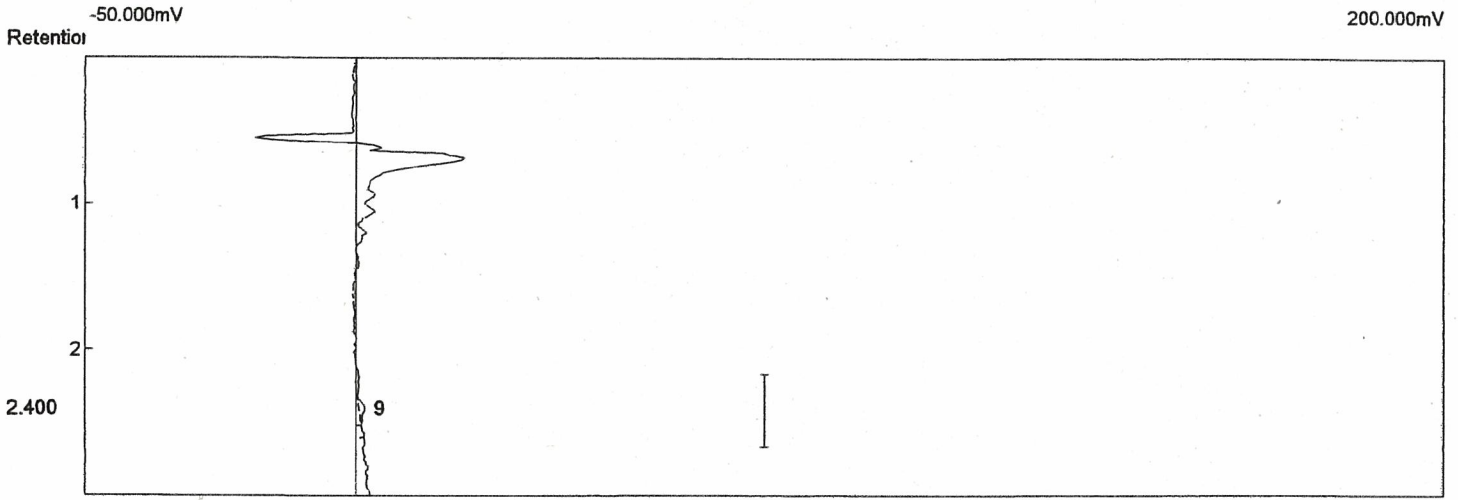






Analysis date: 09/03/2007 09:40:49  
Method: Soil Gas 0.5ml  
Description: Ch. 2 PID  
Data file: pid1008.CHR (a:\20070903)  
Sample: O - 42 1.0 m

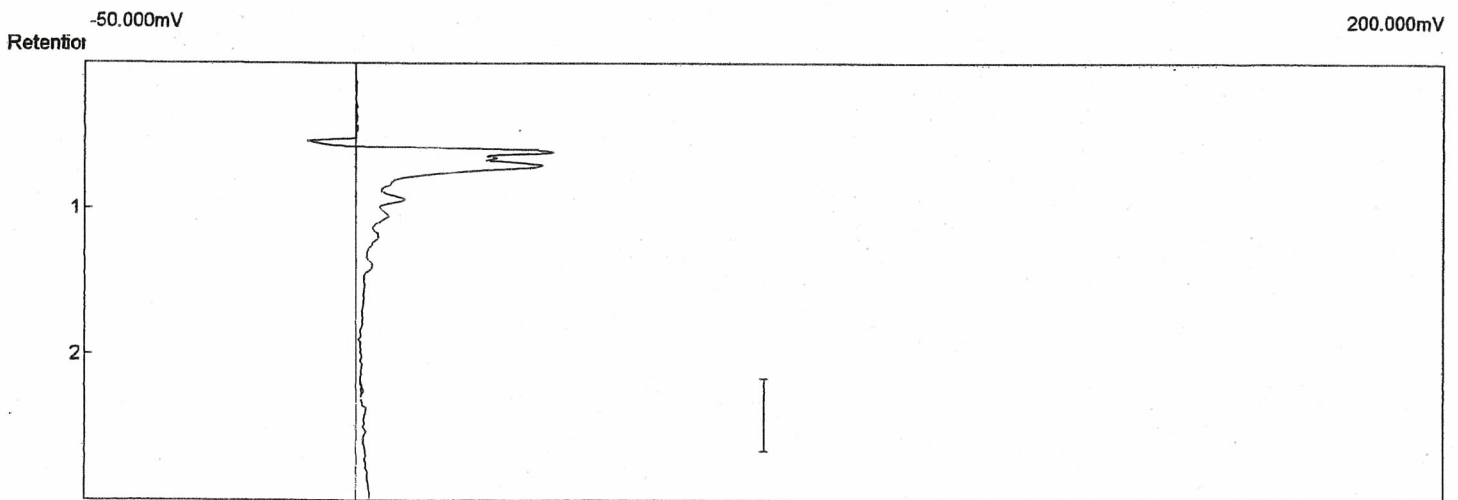
6-1.



Number	Component	Retention	Area	External	Units
9	Benzene	2.400	5.7720	9.7183	ppb
1			5.7720	9.7183	

Analysis date: 09/03/2007 11:20:17  
Method: Soil Gas 0.5ml  
Description: Ch. 2 PID  
Data file: pid1009.CHR (a:\20070903)  
Sample: O - 42 1.5 m

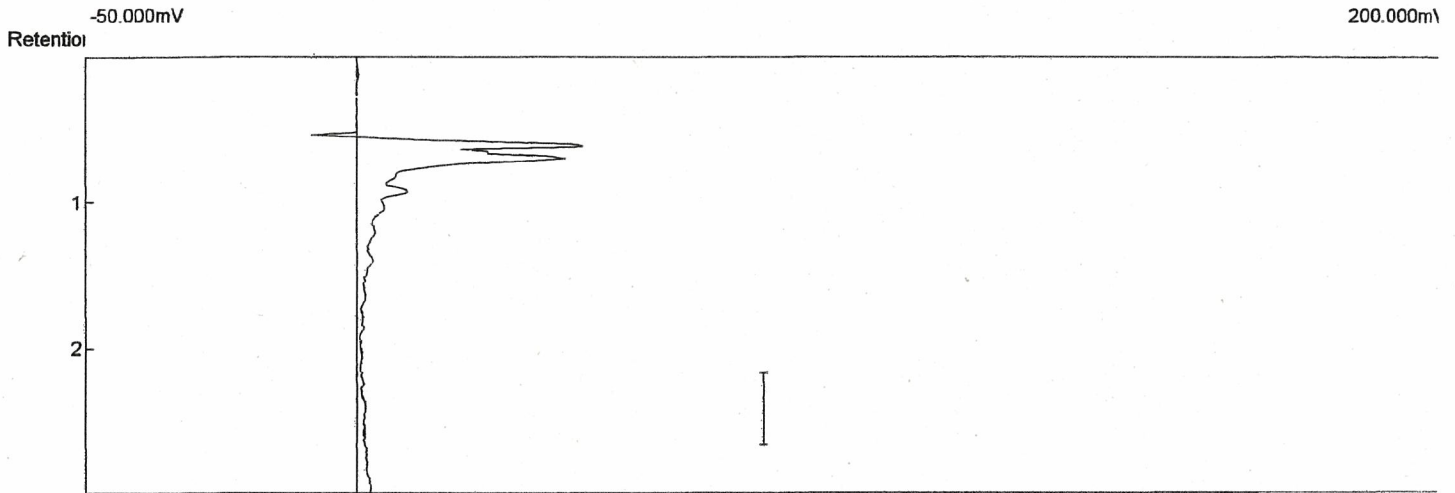
6-2



Number	Component	Retention	Area	External	Units
0			0.0000	0.0000	ppb

Analysis date: 09/03/2007 12:07:33  
 Method: Soil Gas 0.5ml  
 Description: Ch. 2 PID  
 Data file: pid1010.CHR (a:\20070903)  
 Sample: O - 42 2.0 m

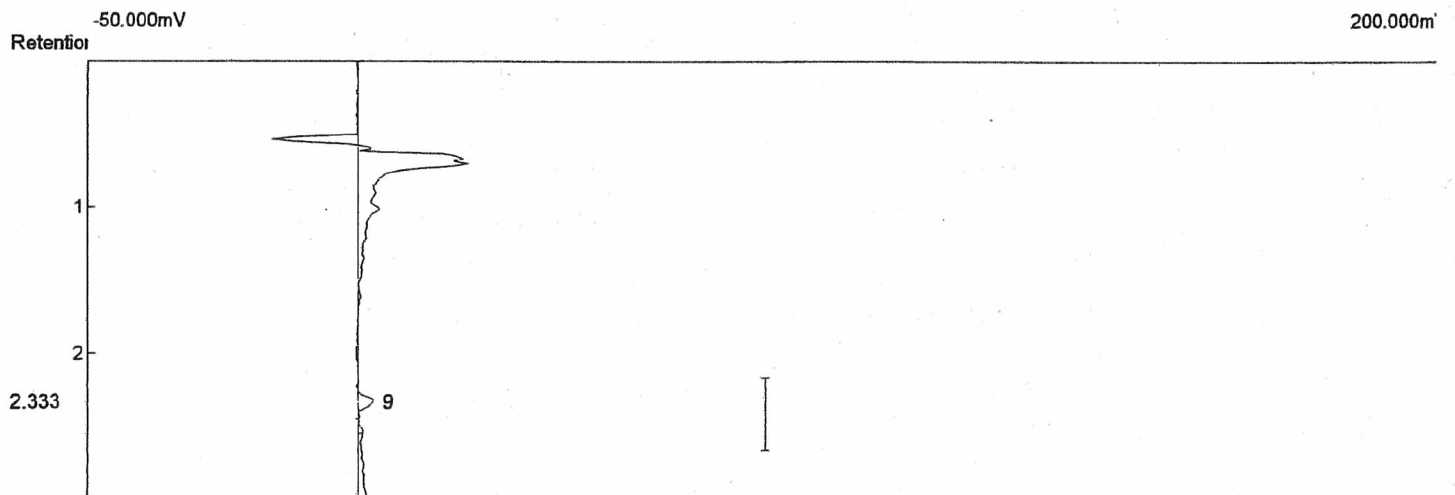
6-3



Number	Component	Retention	Area	External	Units
0			0.0000	0.0000	ppb

Analysis date: 09/03/2007 13:02:52  
 Method: Soil Gas 0.5ml  
 Description: Ch. 2 PID  
 Data file: pid1011.CHR (a:\20070903)  
 Sample: O - 42 2.5 m

6-4

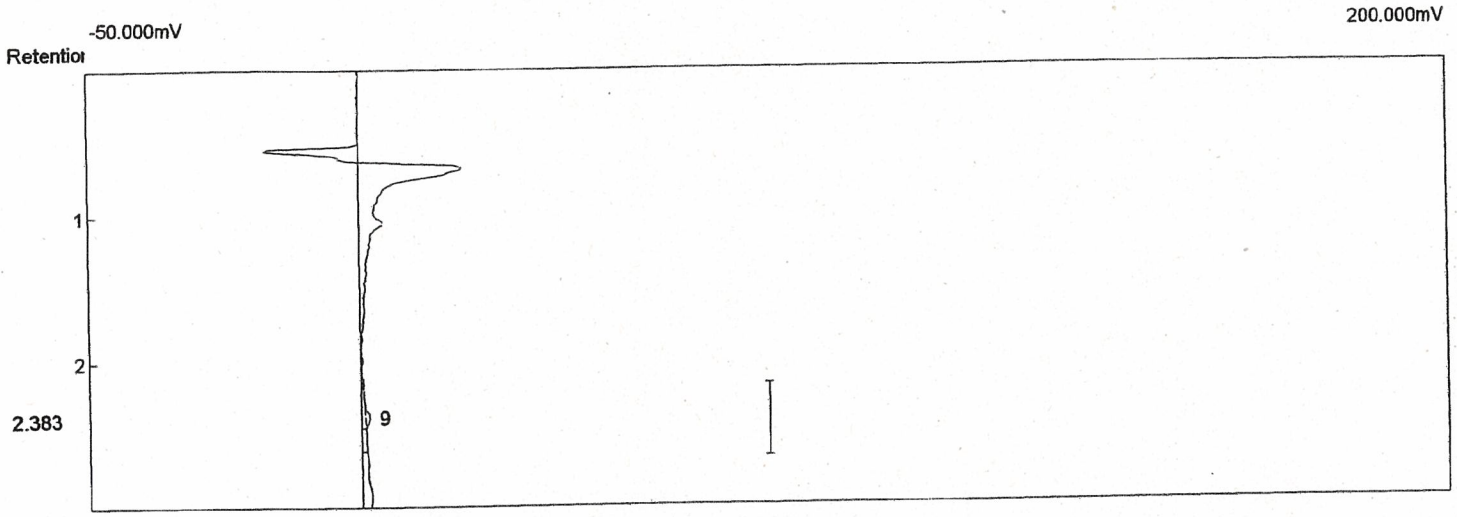


Number	Component	Retention	Area	External	Units
9	Benzene	2.333	13.5080	22.7434	ppb
1			13.5080	22.7434	



Analysis date: 09/03/2007 14:00:25  
Method: Soil Gas 0.5ml  
Description: Ch. 2 PID  
Data file: pid1013.CHR (a:\20070903)  
Sample: O - 42 3.0 m

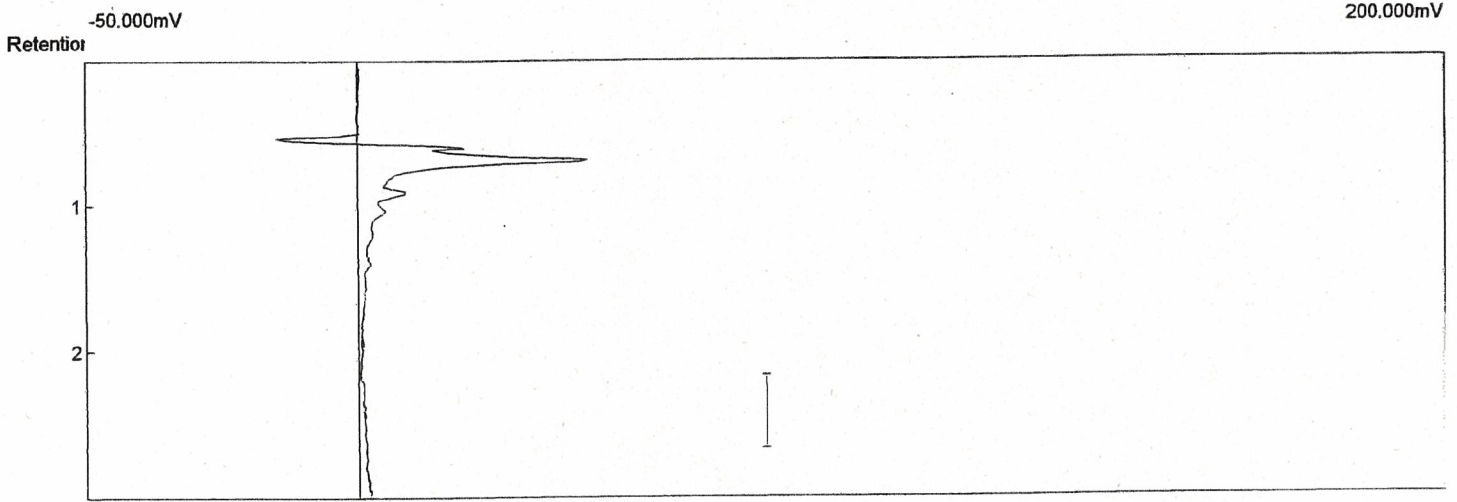
6-5



Number	Component	Retention	Area	External	Units
9	Benzene	2.383	4.8040	8.0885	ppb
1			4.8040	8.0885	

Analysis date: 09/03/2007 15:24:19  
Method: Soil Gas 0.5ml  
Description: Ch. 2 PID  
Data file: pid1014.CHR (a:\20070903)  
Sample: O - 42 3.5 m

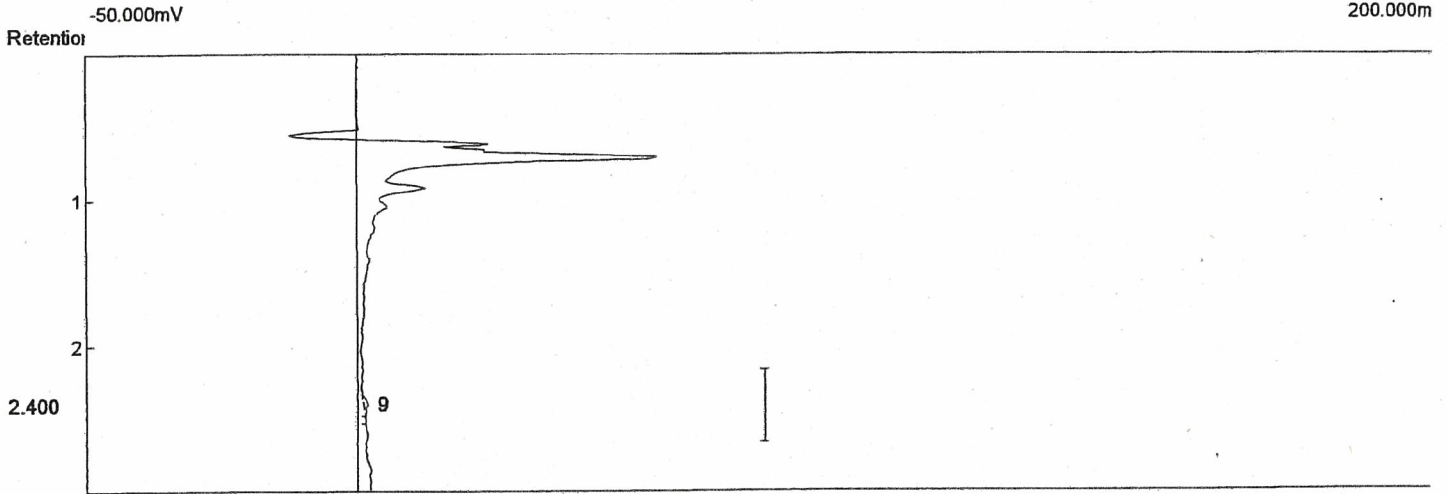
6-6



Number	Component	Retention	Area	External	Units
0			0.0000	0.0000	ppb

Analysis date: 09/03/2007 16:54:07  
 Method: Soil Gas 0.5ml  
 Description: Ch. 2 PID  
 Data file: pid1016.CHR (a:\20070903)  
 Sample: O - 42 4.0 m

6-7

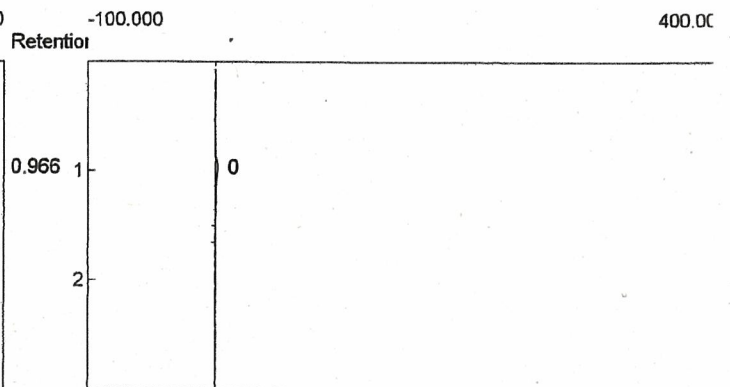
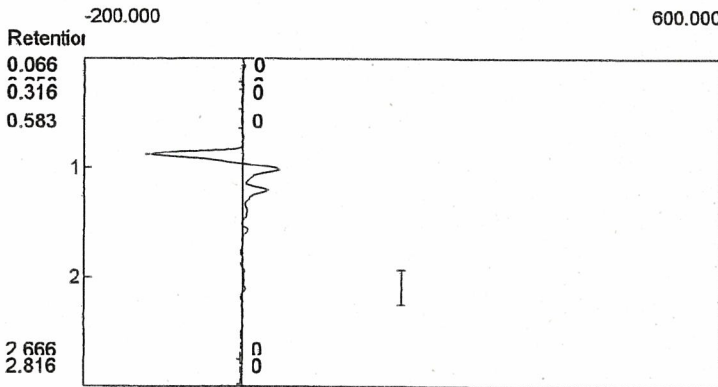


Number	Component	Retention	Area	External	Units
9	Benzene	2.400	3.6510	6.1472	ppb
1			3.6510	6.1472	

Analysis date: 09/26/2007 15:02:45  
 Method: Soil Gas 0.5ml  
 Description: Ch. 2 PID  
 Data file: pid1023.CHR (a:\20070926)  
 Sample: L-34 1.25 m

Analysis date: 09/26/2007 15:02:45  
 Method: Soil Gas 0.5ml  
 Description: Ch. 3 DELCD  
 Data file: del1023.CHR (a:\20070926)  
 Sample: L-34 1.25 m

6-8



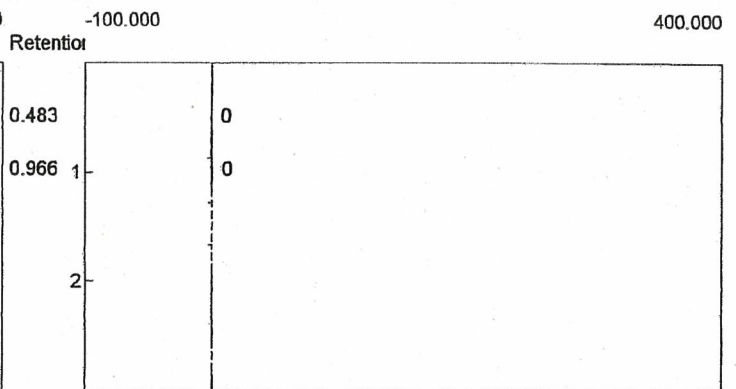
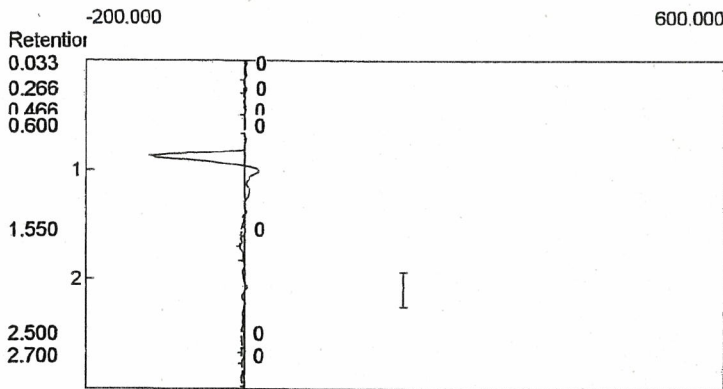
Number	Component	Retention	Area	External	Units
0			0.0000	0.0000	

Number	Component	Retention	Area	External	Units
0			0.0000	0.0000	

Analysis date: 09/26/2007 14:58:56  
 Method: Soil Gas 0.5ml  
 Description: Ch. 2 PID  
 Data file: pid1022.CHR (a:\20070926)  
 Sample: L-34 2.25 m

Analysis date: 09/26/2007 14:58:56  
 Method: Soil Gas 0.5ml  
 Description: Ch. 3 DELCD  
 Data file: del1022.CHR (a:\20070926)  
 Sample: L-34 2.25 m

6-9



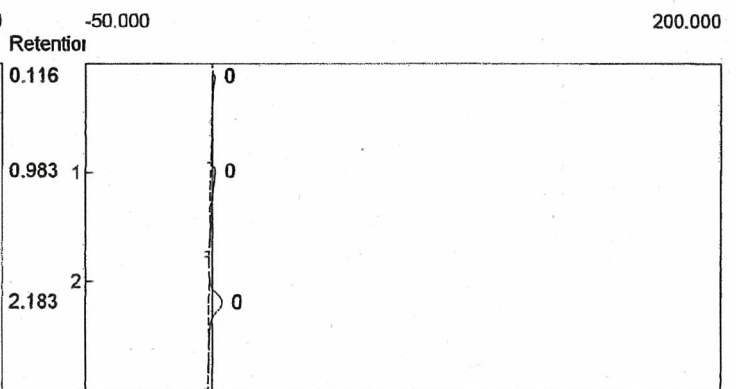
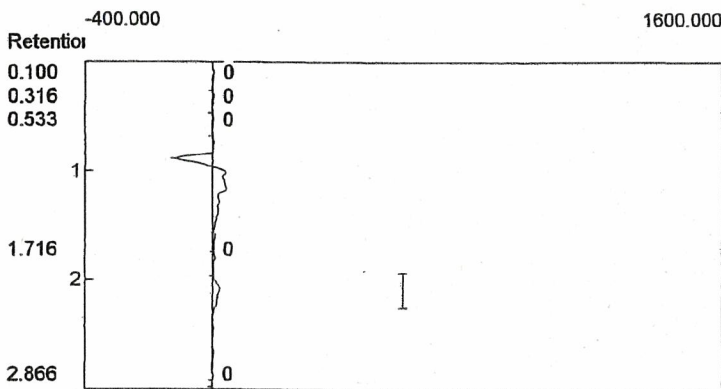
Number	Component	Retention	Area	External	Units
0			0.0000	0.0000	

Number	Component	Retention	Area	External	Units
0			0.0000	0.0000	

Analysis date: 09/27/2007 14:53:52  
 Method: Soil Gas 0.5ml  
 Description: Ch. 2 PID  
 Data file: pid1006.CHR (a:\20070927)  
 Sample: L - 37 2.1 m

Analysis date: 09/27/2007 14:53:52  
 Method: Soil Gas 0.5ml  
 Description: Ch. 3 DELCD  
 Data file: del1006.CHR (a:\20070927)  
 Sample: L - 37 2.1 m

6-10



Number	Component	Retention	Area	External	Units
0			0.0000	0.0000	

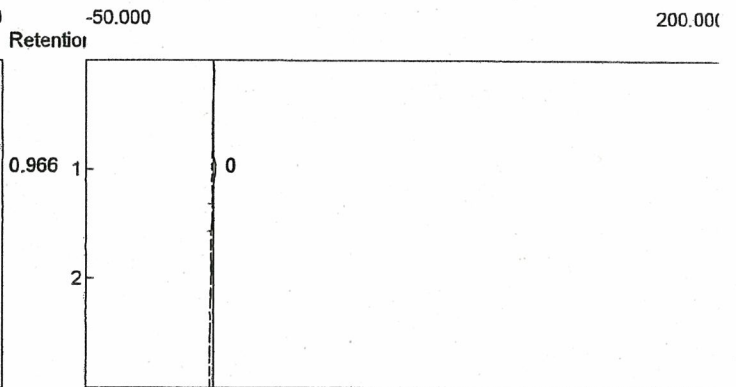
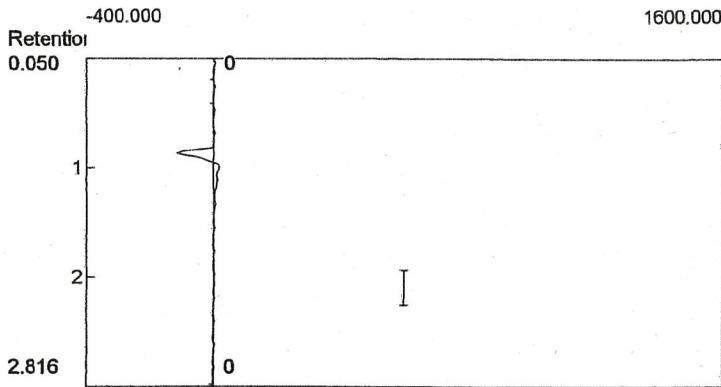
Number	Component	Retention	Area	External	Units
0			0.0000	0.0000	



Analysis date: 09/27/2007 15:00:06  
 Method: Soil Gas 0.5ml  
 Description: Ch. 2 PID  
 Data file: pid1007.CHR (a:\20070927)  
 Sample: L - 37 2.6 m

Analysis date: 09/27/2007 15:00:06  
 Method: Soil Gas 0.5ml  
 Description: Ch. 3 DELCD  
 Data file: del1007.CHR (a:\20070927)  
 Sample: L - 37 2.6 m

6-11

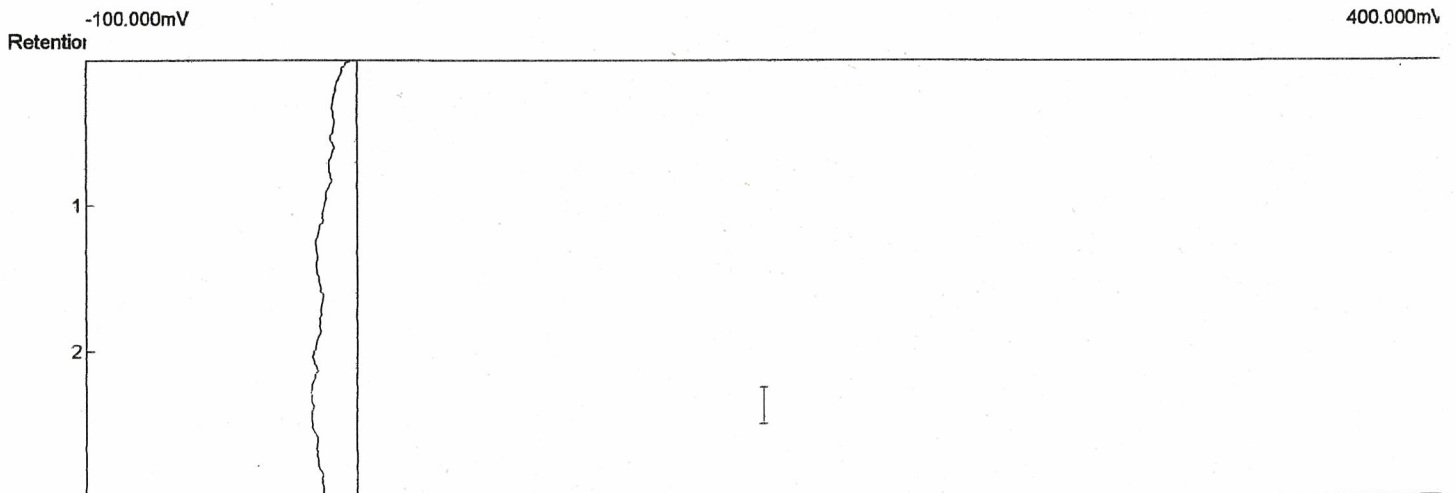


Number	Component	Retention	Area	External	Units
0			0.0000	0.0000	

Number	Component	Retention	Area	External	Units
0			0.0000	0.0000	

Analysis date: 09/03/2007 08:58:54  
 Method: Soil Gas 0.5ml  
 Description: Ch. 2 PID  
 Data file: pid1002.CHR (a:\20070903)  
 Sample: 9/3 Base line

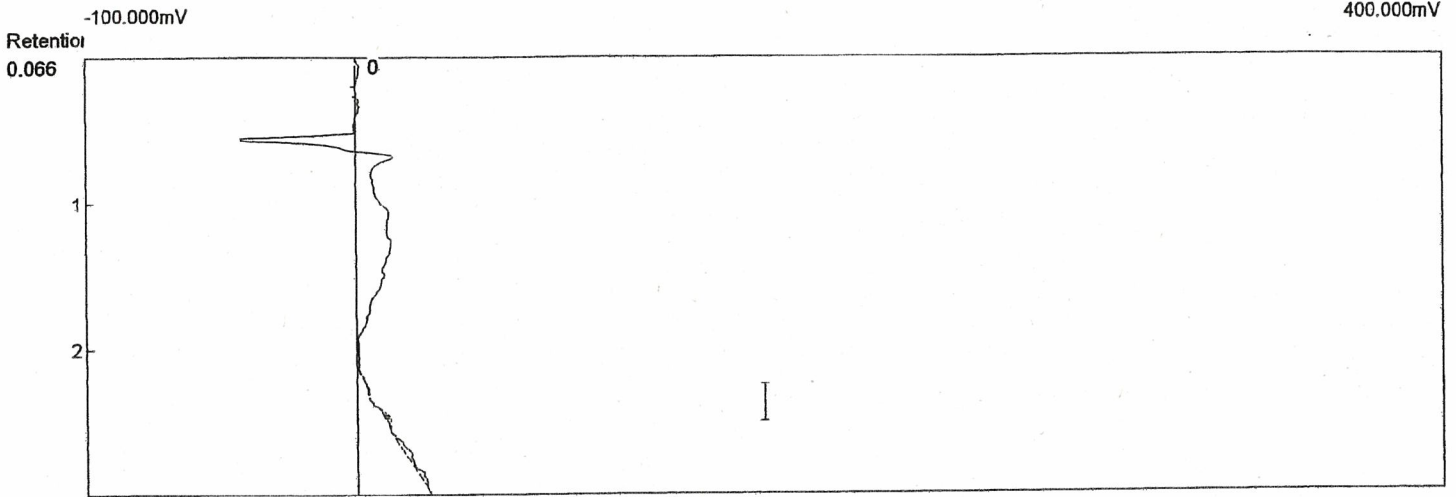
6-12



Number	Component	Retention	Area	External	Units
0			0.0000	0.0000	ppb

Analysis date: 09/03/2007 09:07:44  
 Method: Soil Gas 0.5ml  
 Description: Ch. 2 PID  
 Data file: pid1003.CHR (a:\20070903)  
 Sample: 9/3 Blank

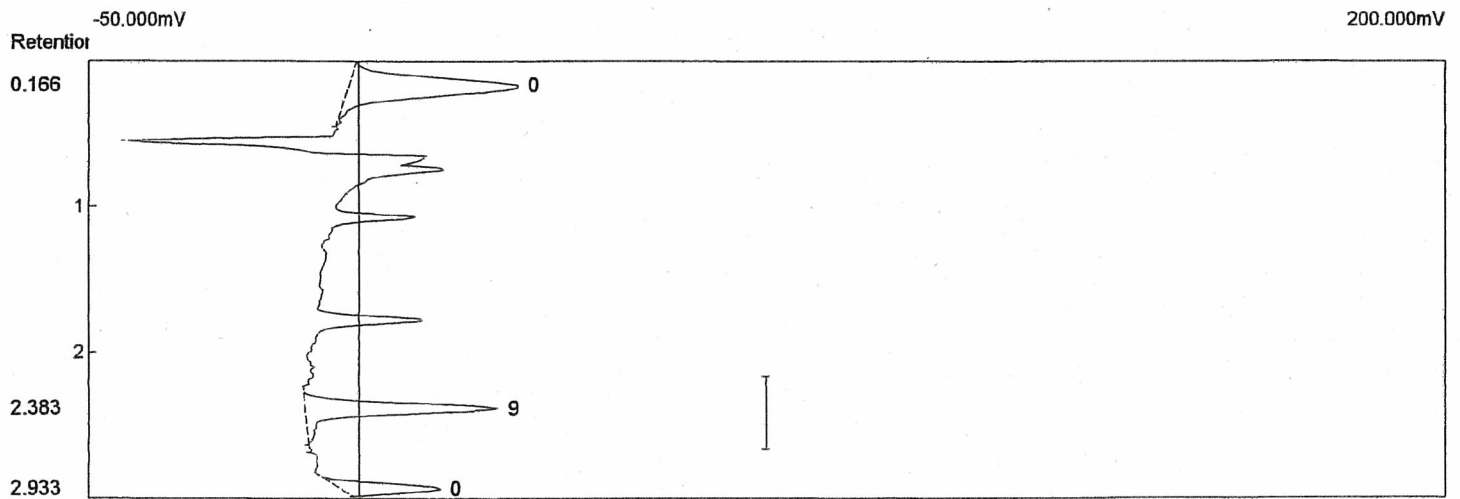
6-13



Number	Component	Retention	Area	External	Units
0			0.0000	0.0000	ppb

Analysis date: 09/03/2007 09:12:14  
 Method: Soil Gas 0.5ml  
 Description: Ch. 2 PID  
 Data file: pid1004.chr (a:\20070903)  
 Sample: 9/3 STD 1

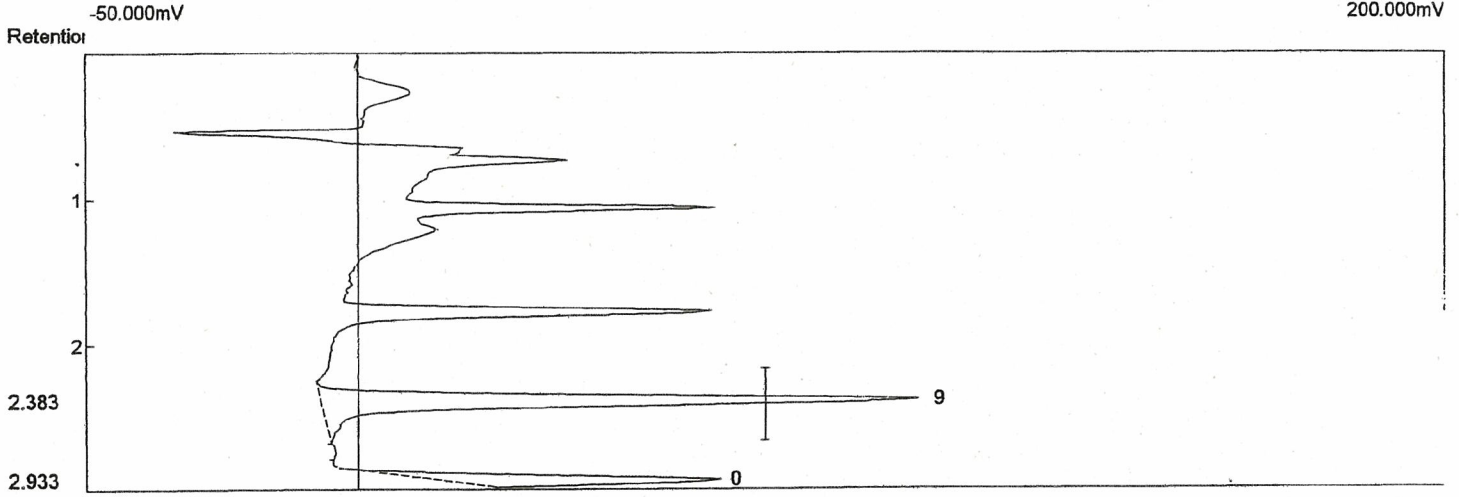
6-14



Number	Component	Retention	Area	External	Units
9	Benzene	2.383	186.4940	314.0000	ppb
1			186.4940	314.0000	

Analysis date: 09/03/2007 09:17:03  
Method: Soil Gas 0.5ml  
Description: Ch. 2 PID  
Data file: pid1005.chr (a:\20070903)  
Sample: 9/3 STD 2

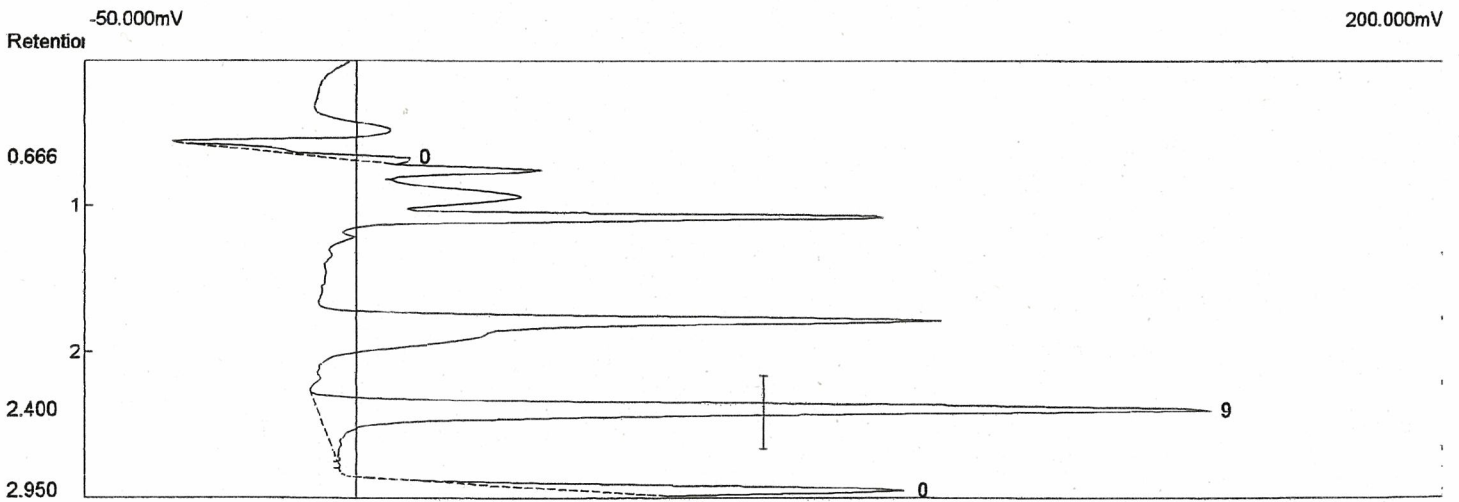
6-15



Number	Component	Retention	Area	External	Units
9	Benzene	2.383	576.2100	1572.0000	ppb
1			576.2100	1572.0000	

Analysis date: 09/03/2007 09:21:14  
Method: Soil Gas 0.5ml  
Description: Ch. 2 PID  
Data file: pid1006.CHR (a:\20070903)  
Sample: 9/3 STD 3

6-16

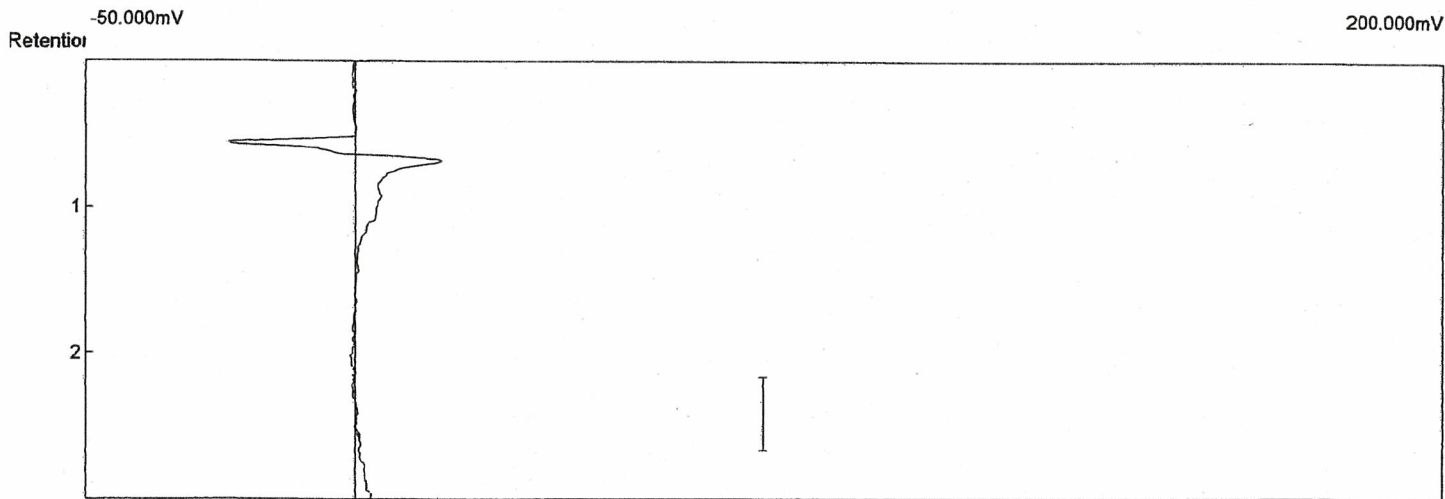


Number	Component	Retention	Area	External	Units
9	Benzene	2.400	892.2060	3144.0000	ppb
1			892.2060	3144.0000	



Analysis date: 09/03/2007 09:33:52  
 Method: Soil Gas 0.5ml  
 Description: Ch. 2 PID  
 Data file: pid1007.CHR (a:\20070903)  
 Sample: 9/3 Blank

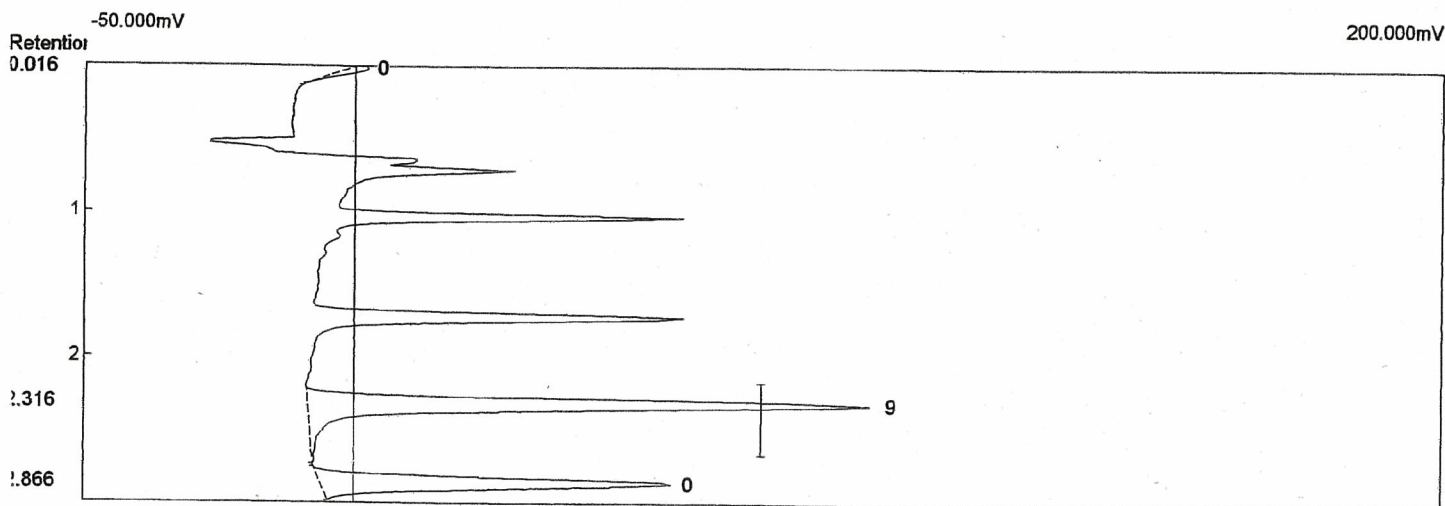
6-17



Number	Component	Retention	Area	External	Units
0		0.0000	0.0000		ppb

Analysis date: 09/03/2007 13:07:23  
 Method: Soil Gas 0.5ml  
 Description: Ch. 2 PID  
 Data file: pid1012.CHR (a:\20070903)  
 Sample: 9/3 STD RT 1

6-18

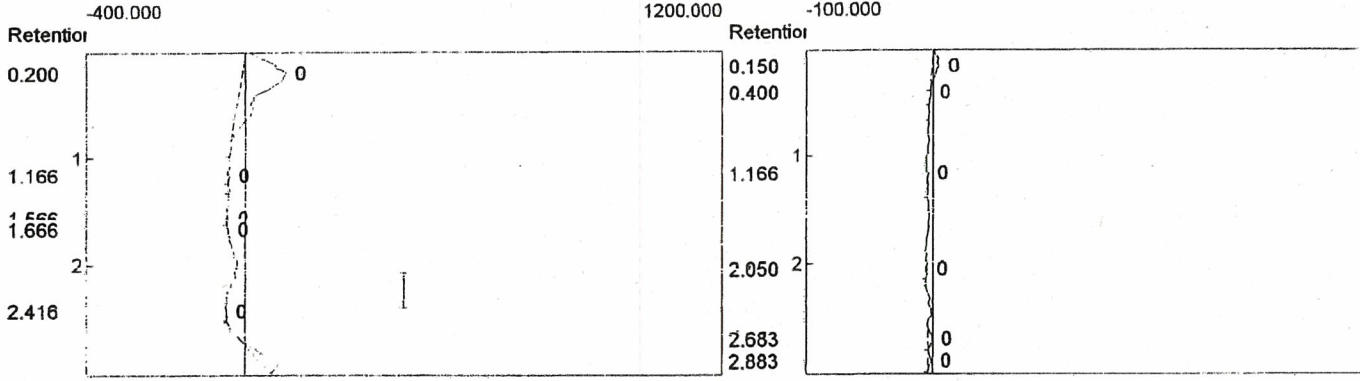


Number	Component	Retention	Area	External	Units
9	Benzene	2.316	557.1900	1510.6036	ppb
1			557.1900	1510.6036	

Analysis date: 09/26/2007 12:58:03  
 Method: Soil Gas 0.5ml  
 Description: Ch. 2 PID  
 Data file: pid1001.CHR (a:\20070926)  
 Sample: 9/26 Base line

Analysis date: 09/26/2007 12:58:03  
 Method: Soil Gas 0.5ml  
 Description: Ch. 3 DELCD  
 Data file: del1001.CHR (a:\20070926)  
 Sample: 9/26 Base line

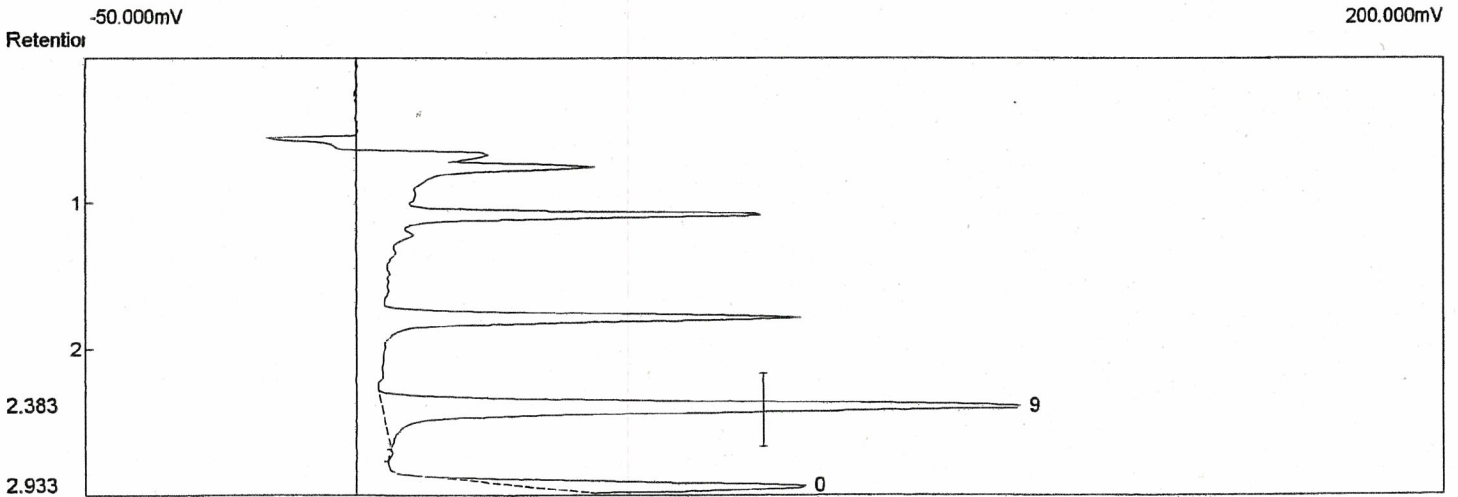
6-20



Number	Component	Retention	Area	External	Units	Number	Component	Retention	Area	External	Units
0			0.0000	0.0000		0			0.0000	0.0000	

Analysis date: 09/03/2007 16:26:44  
 Method: Soil Gas 0.5ml  
 Description: Ch. 2 PID  
 Data file: pid1015.CHR (a:\20070903)  
 Sample: 9/3 STD RT 2

6-19

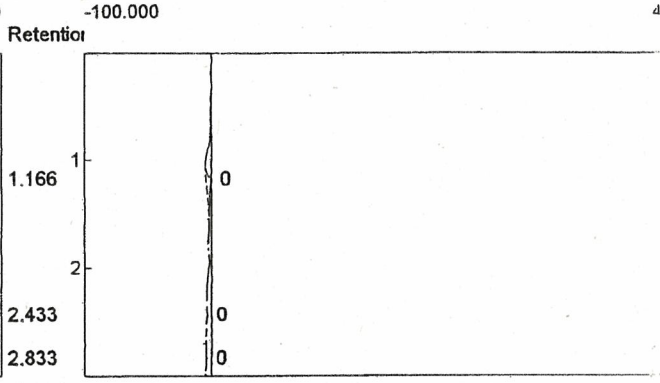
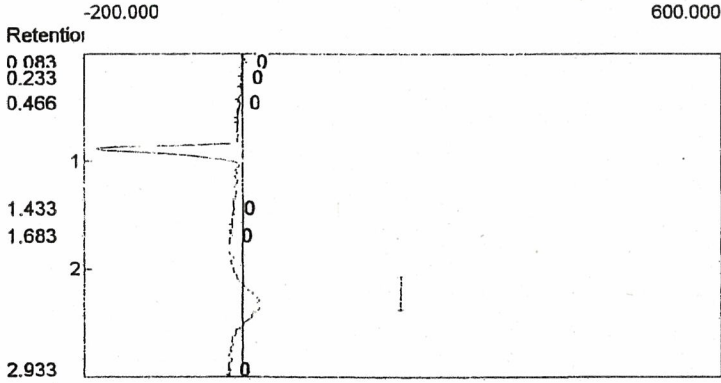


Number	Component	Retention	Area	External	Units
9	Benzene	2.383	620.1500	1790.5904	ppb
1			620.1500	1790.5904	

Analysis date: 09/26/2007 13:02:23  
 Method: Soil Gas 0.5ml  
 Description: Ch. 2 PID  
 Data file: pid1002.CHR (a:\20070926)  
 Sample: 9/26 Blank

Analysis date: 09/26/2007 13:02:23  
 Method: Soil Gas 0.5ml  
 Description: Ch. 3 DELCD  
 Data file: del1002.CHR (a:\20070926)  
 Sample: 9/26 Blank

6-21



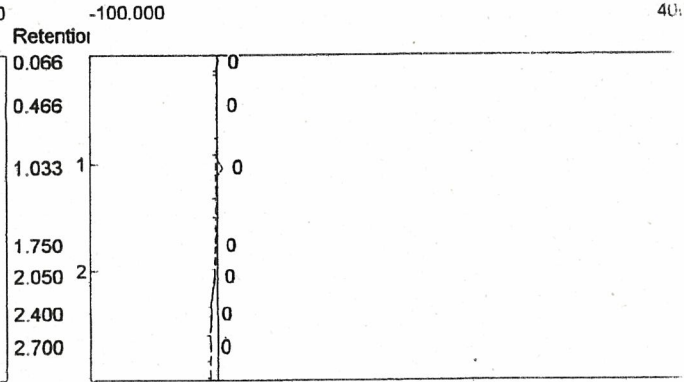
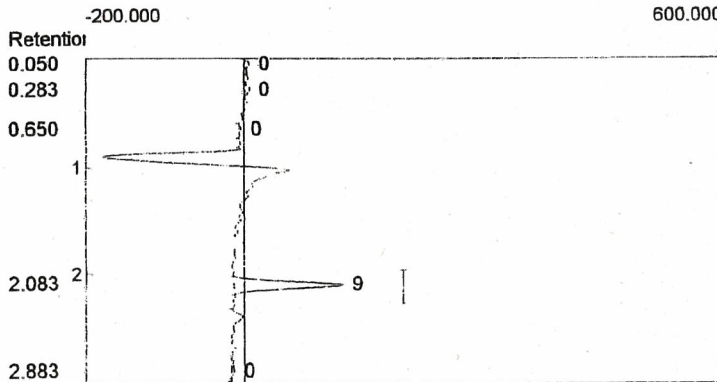
Number	Component	Retention	Area	External	Units
0			0.0000	0.0000	

Number	Component	Retention	Area	External	Units
0			0.0000	0.0000	

Analysis date: 09/26/2007 13:07:06  
 Method: Soil Gas 0.5ml  
 Description: Ch. 2 PID  
 Data file: pid1003.CHR (a:\20070926)  
 Sample: 9/26 STD 1

Analysis date: 09/26/2007 13:07:06  
 Method: Soil Gas 0.5ml  
 Description: Ch. 3 DELCD  
 Data file: del1003.CHR (a:\20070926)  
 Sample: 9/26 STD 1

6-22



Number	Component	Retention	Area	External	Units
9	Benzene	2.083	614.4440	314.0000	ppb
1			614.4440	314.0000	

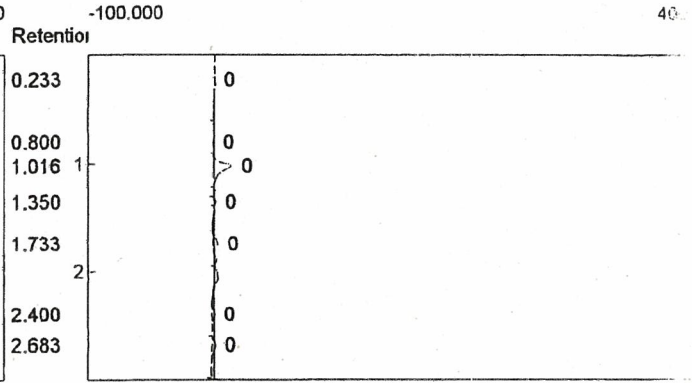
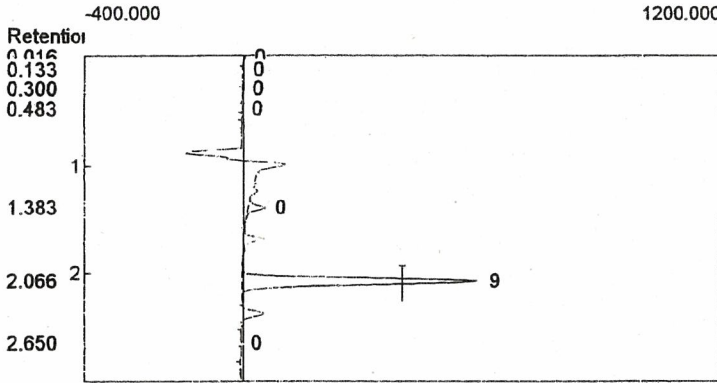
Number	Component	Retention	Area	External	Units
0			0.0000	0.0000	



Analysis date: 09/26/2007 13:11:31  
 Method: Soil Gas 0.5ml  
 Description: Ch. 2 PID  
 Data file: pid1004.CHR (a:\20070926)  
 Sample: 9/26 STD 2

Analysis date: 09/26/2007 13:11:31  
 Method: Soil Gas 0.5ml  
 Description: Ch. 3 DELCD  
 Data file: del1004.CHR (a:\20070926)  
 Sample: 9/26 STD 2

6-23



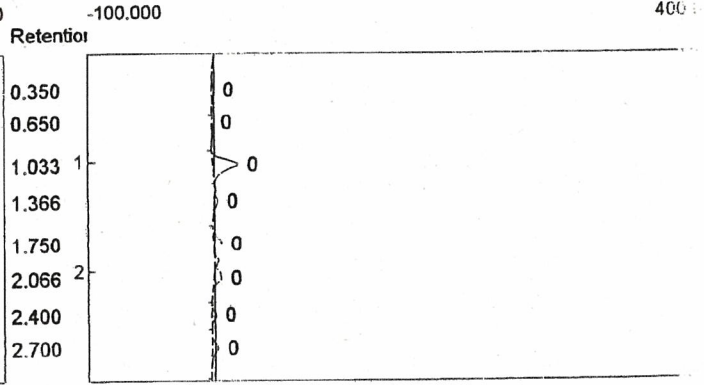
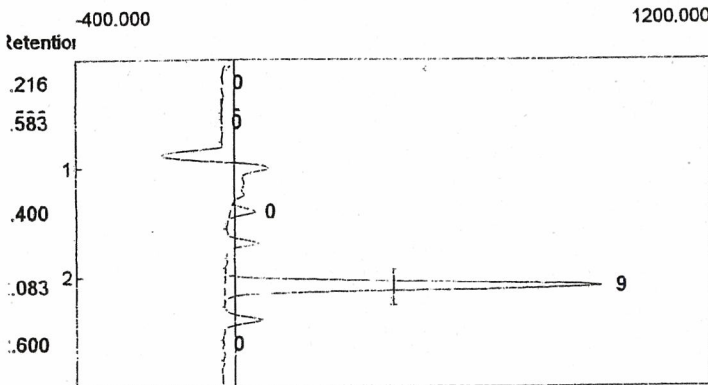
Number	Component	Retention	Area	External	Units
9	Benzene	2.066	2497.8200	1572.0000	ppb
1			2497.8200	1572.0000	

Number	Component	Retention	Area	External	Units
0			0.0000	0.0000	

Analysis date: 09/26/2007 13:15:48  
 Method: Soil Gas 0.5ml  
 Description: Ch. 2 PID  
 Data file: pid1005.CHR (a:\20070926)  
 Sample: 9/26 STD 3

Analysis date: 09/26/2007 13:15:48  
 Method: Soil Gas 0.5ml  
 Description: Ch. 3 DELCD  
 Data file: del1005.CHR (a:\20070926)  
 Sample: 9/26 STD 3

6-24



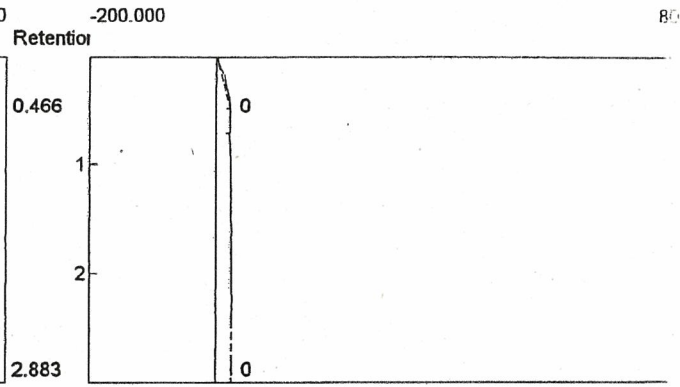
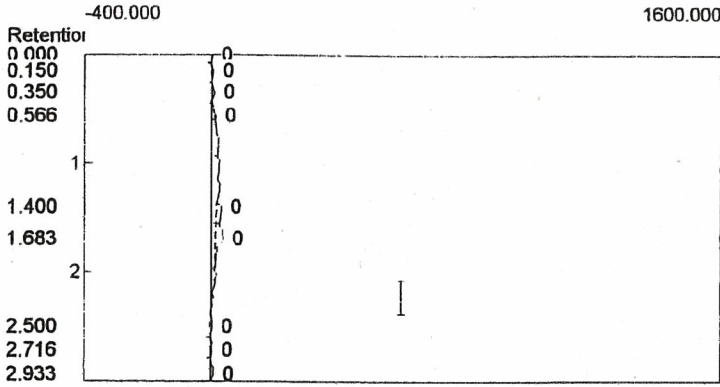
Number	Component	Retention	Area	External	Units
9	Benzene	2.083	4714.0650	3144.0000	ppb
1			4714.0650	3144.0000	

Number	Component	Retention	Area	External	Units
0			0.0000	0.0000	

Analysis date: 09/27/2007 14:26:57  
 Method: Soil Gas 0.5ml  
 Description: Ch. 2 PID  
 Data file: pid1001.CHR (a:\20070927)  
 Sample: 9/27 Base line

Analysis date: 09/27/2007 14:26:57  
 Method: Soil Gas 0.5ml  
 Description: Ch. 3 DELCD  
 Data file: del1001.CHR (a:\20070927)  
 Sample: 9/27 Base line

6-25



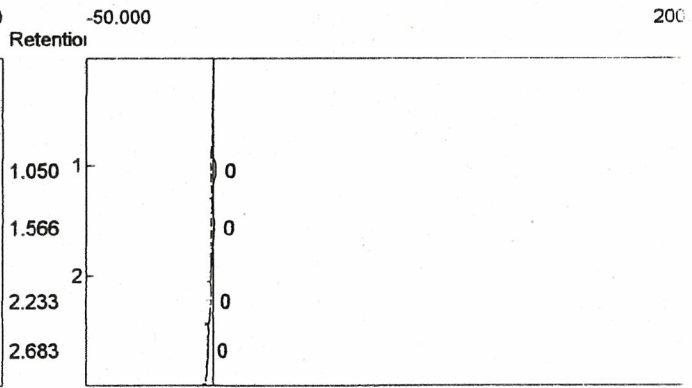
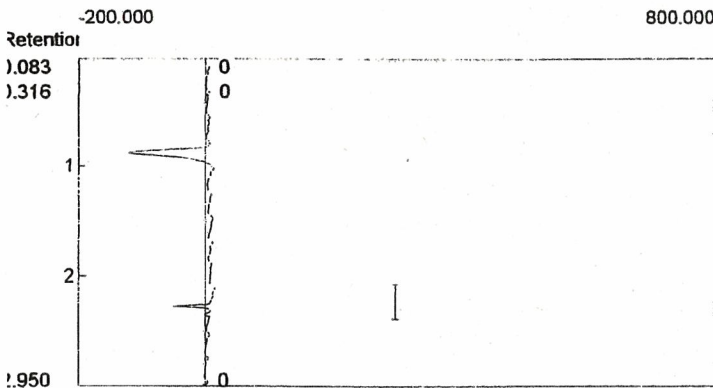
Number	Component	Retention	Area	External	Units
0			0.0000	0.0000	

Number	Component	Retention	Area	External	Units
0			0.0000	0.0000	

Analysis date: 09/27/2007 14:31:38  
 Method: Soil Gas 0.5ml  
 Description: Ch. 2 PID  
 Data file: pid1002.CHR (a:\20070927)  
 Sample: 9/27 Blank

Analysis date: 09/27/2007 14:31:38  
 Method: Soil Gas 0.5ml  
 Description: Ch. 3 DELCD  
 Data file: del1002.CHR (a:\20070927)  
 Sample: 9/27 Blank

6-26



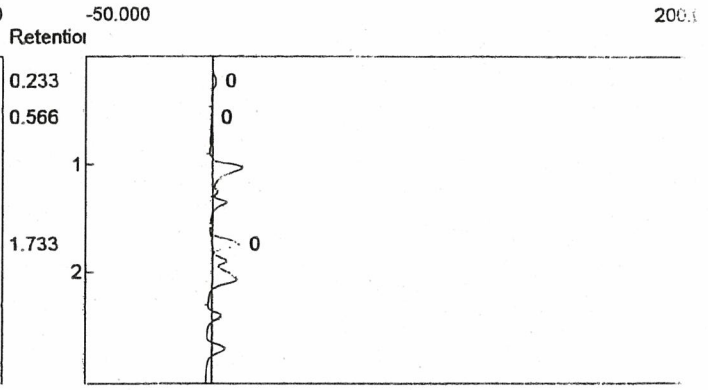
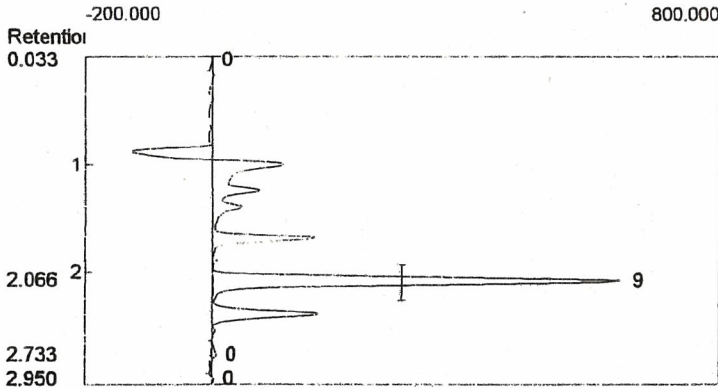
Number	Component	Retention	Area	External	Units
0			0.0000	0.0000	

Number	Component	Retention	Area	External	Units
0			0.0000	0.0000	

Analysis date: 09/27/2007 14:41:37  
 Method: Soil Gas 0.5ml  
 Description: Ch. 2 PID  
 Data file: pid1004.CHR (a:\20070927)  
 Sample: 9/27 STD 2

Analysis date: 09/27/2007 14:41:37  
 Method: Soil Gas 0.5ml  
 Description: Ch. 3 DELCD  
 Data file: del1004.CHR (a:\20070927)  
 Sample: 9/27 STD 2

6-28



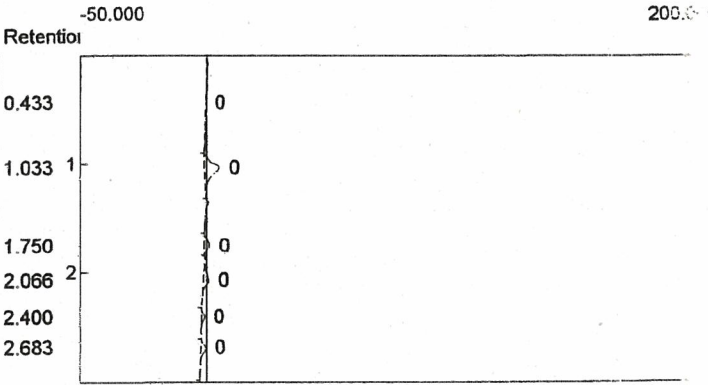
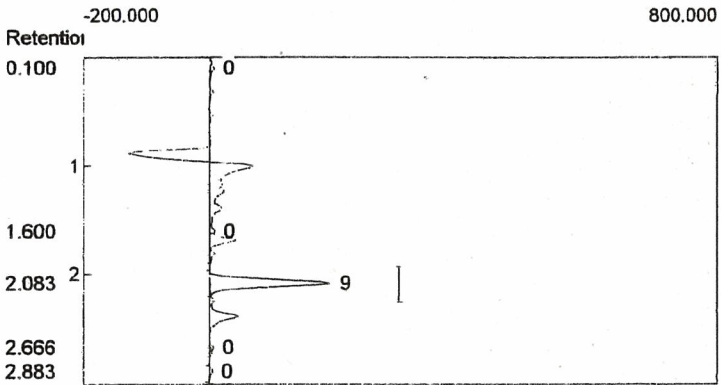
Number	Component	Retention	Area	External	Units
9	Benzene	2.066	3025.8920	1572.0000	ppb
1		3025.8920	1572.0000		

Number	Component	Retention	Area	External	Units
0			0.0000	0.0000	

Analysis date: 09/27/2007 14:37:14  
 Method: Soil Gas 0.5ml  
 Description: Ch. 2 PID  
 Data file: pid1003.CHR (a:\20070927)  
 Sample: 9/27 STD 1

Analysis date: 09/27/2007 14:37:14  
 Method: Soil Gas 0.5ml  
 Description: Ch. 3 DELCD  
 Data file: del1003.CHR (a:\20070927)  
 Sample: 9/27 STD 1

6-27



Number	Component	Retention	Area	External	Units
9	Benzene	2.083	848.1620	314.0000	ppb
1		848.1620	314.0000		

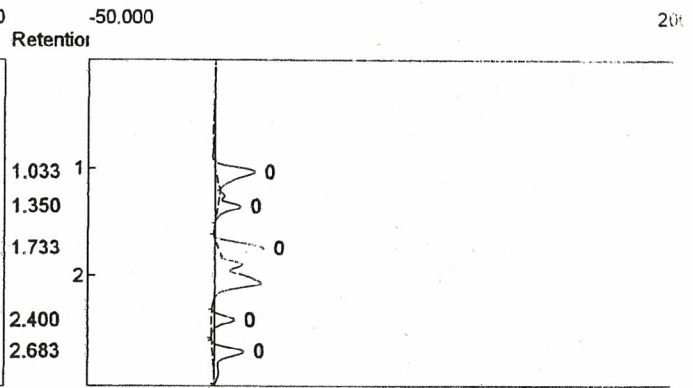
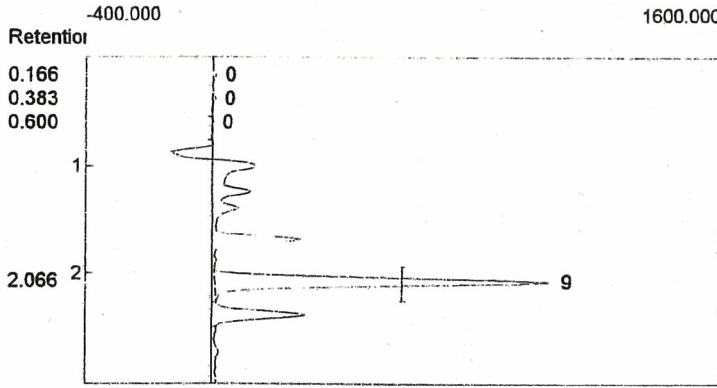
Number	Component	Retention	Area	External	Units
0			0.0000	0.0000	



Analysis date: 09/27/2007 14:47:23  
 Method: Soil Gas 0.5ml  
 Description: Ch. 2 PID  
 Data file: pid1005.CHR (a:\20070927)  
 Sample: 9/27 STD 3

Analysis date: 09/27/2007 14:47:23  
 Method: Soil Gas 0.5ml  
 Description: Ch. 3 DELCD  
 Data file: del1005.CHR (a:\20070927)  
 Sample: 9/27 STD 3

6-29



Number	Component	Retention	Area	External	Units
9	Benzene	2.066	5321.7040	3144.0000	ppb
1			5321.7040	3144.0000	

Number	Component	Retention	Area	External	Units
0			0.0000	0.0000	